



License No. 800025015
FL License # CMTL-0003
CLIA No. 10D1094068

Certificate of Analysis

R&D

TERPLANDIA LLC
1271 EVERGREEN ROAD
REDWAY, CA 95560

Batch # LR101
Batch Date: 2021-06-16
Extracted From: 5-1-2021

Test Reg State: Florida

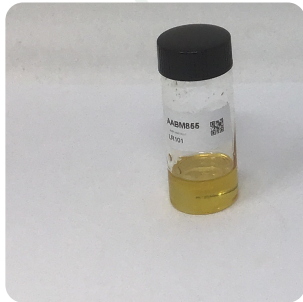
Production Facility: Terplandia LLC
Production Date: 2021-06-16

Order # TER210617-010026
Order Date: 2021-06-17
Sample # AABM855

Sampling Date: 2021-06-22
Lab Batch Date: 2021-06-22
Completion Date: 2021-07-02

Initial Gross Weight: 22.997 g
Net Weight: 5.422 g

Number of Units: 1
Net Weight per Unit: 5422.000 mg



Potency
Tested

Product Image

Delta 8/Delta 10 Potency
12

Specimen Weight: 53.870 mg

| Analyte | Dilution (1:n) | LOD (%) | LOQ (%) | Result (mg/g) | (%) |
|--------------|----------------|----------|---------|---------------|--------|
| CBD | 100.000 | 0.000054 | 0.001 | 445.000 | 44.500 |
| Delta-8 THC | 100.000 | 0.000026 | 0.001 | 270.900 | 27.090 |
| THCV | 100.000 | 0.000007 | 0.001 | 18.860 | 1.886 |
| CBC | 100.000 | 0.000018 | 0.001 | 15.000 | 1.500 |
| THCA-A | 100.000 | 0.000032 | 0.001 | <LOQ | <LOQ |
| CBN | 100.000 | 0.000014 | 0.001 | <LOQ | <LOQ |
| Delta-10 THC | 1000.000 | 0.000003 | 0.001 | <LOQ | <LOQ |
| CBGA | 100.000 | 0.000008 | 0.001 | <LOQ | <LOQ |
| Delta-9 THC | 100.000 | 0.000013 | 0.001 | <LOQ | <LOQ |
| CBG | 100.000 | 0.000248 | 0.001 | <LOQ | <LOQ |
| CBDV | 100.000 | 0.000065 | 0.001 | <LOQ | <LOQ |
| CBDA | 100.000 | 0.00001 | 0.001 | <LOQ | <LOQ |

Tested
(LCUV)

Potency Summary

| | |
|--|---|
| 27.090% Total Delta 8 1,468.820mg | Total Delta 10 None Detected |
| Total THC None Detected | Total CBD 44.500% 2,412.790mg |
| Total CBG None Detected | Total CBN None Detected |
| Other Cannabinoids 3.386% 183.589mg | Total Cannabinoids 74.976% 4,065.199mg |

Xueli Gao
Ph.D., DABT
Lab Toxicologist

Aixia Sun
D.H.Sc., M.Sc., B.Sc., MT (AAB)
Lab Director/Principal Scientist



Definitions and Abbreviations used in this report: *Total CBD = CBD + (CBD-A * 0.877), *Total THC = THCA-A * 0.877 + Delta 9 THC, *CBG Total = (CBGA * 0.877) + CBG, *CBN Total = (CBNA * 0.877) + CBN, *Other Cannabinoids Total = CBC + CBDV + THCV + THCV-A, *Total Detected Cannabinoids = CBD Total + CBG Total + CBN Total + THC Total + CBC + CBDV + THCV + THCV-A, *Analyte Details above show the Dry Weight Concentrations unless specified as 12% moisture concentration. (mg/ml) = Milligrams per Milliliter, LOQ = Limit of Quantitation, LOD = Limit of Detection, Dilution = Dilution Factor (ppb) = Parts per Billion, (%) = Percent, (cfu/g) = Colony Forming Unit per Gram (cfu/g) = Colony Forming Unit per Gram, , LOD = Limit of Detection, (µg/g) = Microgram per Gram (ppm) = Parts per Million, (ppm) = (µg/g), (aw) = aw (area ratio) = Area Ratio, (mg/Kg) = Milligram per Kilogram, *Measurement of Uncertainty = +/- 5%



This report shall not be reproduced, without written approval, from ACS Laboratory. The results of this report relate only to the material or product analyzed. Test results are confidential unless explicitly waived otherwise. Accredited by a third-party accrediting body as a competent testing laboratory pursuant to ISO/IEC 17025 of the International Organization for Standardization.